



## Welcome Back to Spring Term!

Whilst this term is called Spring Term - we are definitely in the middle of Winter. With cold weather set to continue, please make sure that your child has a warm coat to wear for playtimes.

Please make sure that you are following the uniform policy:

- Purple jumper with school logo
- White polo shirt with/without logo or white shirt and tie (Year 5/6 only). White shirts need to be worn with a tie.
- Dark grey school trousers (NOT LEGGINGS), shorts, pinafore, skirt. (Nursery children can wear own choice of leg wear)
- grey, black, white or purple socks/tights
- Black school shoes or trainers (no sandals, wellies or crocs) (nursery children can wear trainers)

## PE Kit

- House colour T shirt with logo
- Plain black tracksuit top or hoodie or Omnia Hoodie
- Black leggings, tracksuit bottoms, shorts
- trainers

Long hair MUST be **completely tied back** every day. Small purple or black hair accessories can be worn.

No jewellery with exception of small studs which will need to be removed for PE.

## Parking

Please do be considerate when parking near the school. Prior to Christmas we received a number of complaints from local residents of their drive ways being blocked, parents being verbally aggressive and that parking was, at times, dangerous.

Do remember that you can use Station Garden to park in which is only a few minutes walk from school.

## The next two weeks...

Monday 12 <sup>th</sup> January	Outdoor learning Elm Class
Tuesday 13 <sup>th</sup> January	Reception Mastering Number at home Parent workshop 2:15pm
Wednesday 14 <sup>th</sup> January	Developing communication, English and Maths with your Early Years Child course 9-11am Year 5/6 Indoor athletics (selected team) Mastering Number at Home Year 1 workshop 2:15pm
Thursday 15 <sup>th</sup> January	Year 2 Mastering Number at home workshop 2:15pm
Friday 16 <sup>th</sup> January	VR Experiences for Year 3: Volcanoes, Yr 4 - Vikings and Yr 6 Arctic
Monday 19 <sup>th</sup> January	Outdoor learning Birch
Tuesday 20 <sup>th</sup> January	Year 5 Winchester Science Museum trip
Thursday 22 <sup>nd</sup> January	
Friday 23 <sup>th</sup> January	Young Voices Choir to O2 Arena



## Curriculum Information

You will shortly be receiving curriculum information for your child's year group. This gives you an overview of what your child will be learning over the spring term. Do take time to have a look through it so that you talk with your child about what they have done in school. You will also receive 'knowledge organiser' for our PSHE programme, Jigsaw, so that you can see what will be covered in these important sessions.

## Staffing update

- Miss Suarez is now teaching Sycamore, Miss White has started her maternity leave.
- Miss Shekhar will be supporting in Year 1, Beech Class, Miss Elliot will be teaching across the school covering our PPA.



## Punctuality

It is vitally important that children arrive on time for school every day. The school gates open at 8:40am and shut at 8:50am - this has been in place for many years and does give sufficient time for every child to get into school on time. Being late for school is highly disruptive for your child and the rest of the class.



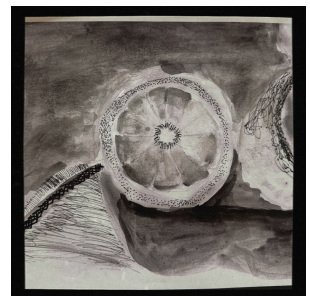
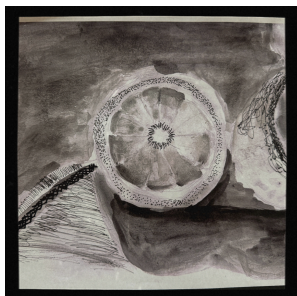
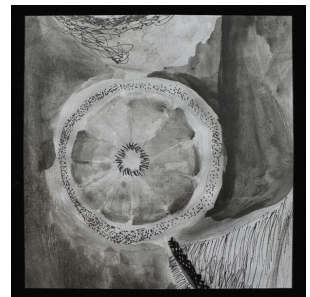
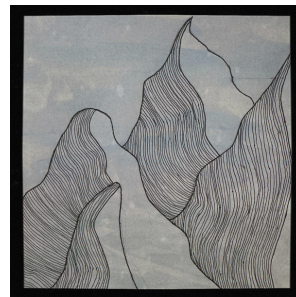
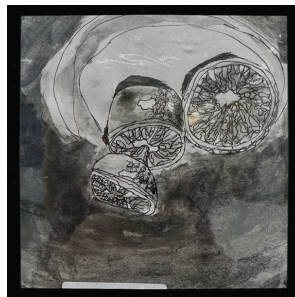
A letter has already gone to Year 5/6 families regarding WhatsApp. As a school we are spending increased amount of time dealing with the fallout of messages sent via WhatsApp. Some children are reluctant to come into school following unpleasant interactions, or are upset and fearful about what may happen next.

WhatsApp is recommended for age 13 plus. We have not found this app to be a positive experience for many of our children as they lack the maturity needed. Whilst children tell us that they know how to stay safe online, they do not seem to realise that WhatsApp forms part of this online world and fail to understand the severity of their words and actions.

As parents, it is increasingly difficult to support your child navigating this online world - however, it is vital that you check your child's phone regularly to check that they are using these tools appropriately.

## Booking lunches

Please make sure that you book your child's lunch prior to the cut off so that the full choice of meals is available for you to select.



Fantastic art work from Year 4 (mountains) and Year 5 (ink work)

## Term dates 2025-26

First Day of term	Wednesday 3 <sup>rd</sup> September 2025
Half term	27 <sup>th</sup> October – 31 <sup>st</sup> October 2025
Last day of term	Thursday 18 <sup>th</sup> December at 12 noon (nursery sessions finish on Wednesday 17 <sup>th</sup> December)
Winter Holidays	19 <sup>th</sup> December -2 <sup>nd</sup> January
Further information	Wednesday 3 <sup>rd</sup> September 2025 and Thursday 4 <sup>th</sup> September 2025 half days for Reception children, allocated as either morning or afternoon. 5 <sup>th</sup> September in full time. 8 <sup>th</sup> September Pre-school children start on allocated days INSET DAYS Monday 1 <sup>st</sup> September and Tuesday 2 <sup>nd</sup> September Friday 10 <sup>th</sup> October 2024
Spring Term	
First day of term	Tuesday 6 <sup>th</sup> January 2026
Half term	16 <sup>th</sup> February 2026 – 20 <sup>th</sup> Feb 2026
Last day of term	Pre school – Thursday 26 <sup>th</sup> March 2026 Rest of school Friday 27 <sup>th</sup> March (school finishes at 12 noon, gates will open at 11:50am)
Easter/Spring holidays	30 <sup>th</sup> March till 10 <sup>th</sup> April 2026
Further information	Inset Days. Monday 5 <sup>th</sup> January Inset Day school closed to children
Summer term	
First day of term	Monday 13 <sup>th</sup> April 2026
Half term	25 <sup>th</sup> – 29 <sup>th</sup> May 2026
Last day of term	Pre school: Thursday 16 <sup>th</sup> July Rest of school: Friday 17 <sup>th</sup> July at 12 noon. Gates will open at 11:50am.
Further information	INSET DAYS Friday 12 <sup>th</sup> June, school closed to children

## 2026 Spring 1

When	who	What
Tuesday 6th January	whole school	Term starts at 8:40am
8 <sup>th</sup> January	Chestnut class Year 3	Swimming starts
12 <sup>th</sup> January	Elm Class	Outdoor learning
13 <sup>th</sup> January	Reception parents	Reception Mastering Number at home parent workshop 2:15 pm
14 <sup>th</sup> January	Year 1 parents	Year 1 mastering number at home parent workshop 2:15pm
15 <sup>th</sup> January	Year 2 parents	Year 2 mastering number at home parent workshop 2:15pm
14 <sup>th</sup> - 22nd January	Year 6	Bikeability
16 <sup>th</sup> January	years 3,4 and 6	Virtual reality sessions: Year 3 - volcanoes Year 4: Vikings Year 6: The arctic
19 <sup>th</sup> January	Birch Class	Outdoor learning Birch Class
20 <sup>th</sup> January	Year 5	Trip to Winchester Science Museum
23 <sup>rd</sup> January	choir going to Young Voices	Young Voices concert at the O2 London. We will leave school at 9:15am and return at around midnight.
27 <sup>th</sup> January	whole school	Maths House competition
28 <sup>th</sup> January	Year 4	International Day at Didcot Girls School
28 <sup>th</sup> January	Parents of children in Early years	Developing communication, English and Maths with your Early Years Child

**2026 Spring 1 continued**

<b>When</b>	<b>who</b>	<b>What</b>
29 <sup>th</sup> January	Year 2	Hampton Court Palace
29 <sup>th</sup> January	Year 3	Rocking Rocks workshop
2 <sup>nd</sup> Feb	Birch Class	Outdoor learning
3 <sup>rd</sup> Feb	KS2	National story telling week workshop
4 <sup>th</sup> February	Parents of children in Early Years	Developing communication, English and Maths with your Early Years Child
4 <sup>th</sup> Feb	Year 1	Geography Field work -Local area study
6 <sup>th</sup> Feb	Year 1 and 3	Police visit
9 <sup>th</sup> February	Elm class	Outdoor learning
9 <sup>th</sup> February	whole school	learning reviews
11 <sup>th</sup> February	whole school	learning reviews
11 <sup>th</sup> February	Parents of children in early years	Developing communication, English and Maths with your Early Years Child
16 <sup>th</sup> - 20 <sup>th</sup> February	whole school	half term.

## 2026 Spring 2

When	Who	What...
23rd February	whole school	Spring 2 starts
24 <sup>th</sup> February	Year 1	Great Fire of London workshop
25 <sup>th</sup> February	Parents	Supporting your child with managing feelings
3rd March	Whole school	Roving bookshop in school
4 <sup>th</sup> March	parents	Supporting your child with managing feelings
2 <sup>nd</sup> - 6 <sup>th</sup> March	whole school	Book week events
10 <sup>th</sup> March	Year 6	Presentation to parents at 3pm
11 <sup>th</sup> March	Parents	Supporting your child with managing feelings
11 <sup>th</sup> March	Whole school	PTA Family Film night - more information to come date to be confirmed
16 <sup>th</sup> March	Year 4	Presentation to parents at 3pm
17 <sup>th</sup> March	Year 3	Presentation to parents at 3pm
18 <sup>th</sup> March	parents	Supporting your child with managing feelings
19 <sup>th</sup> March	Year 2	Elizabeth I workshop
19 <sup>th</sup> March	Year 5	Presentation to parents at 3pm
25 <sup>th</sup> March	parents	Supporting your child with managing feelings
25 <sup>th</sup> March	Parents of Rocksteady children	Rocksteady Concerts 10:30am and 2:30pm
27 <sup>th</sup> March	pre-school	No nursery sessions
27 <sup>th</sup> March	Whole school	End of term at 12 noon. Gates open at 11:50am

**2026 Summer 1**

<b>When</b>	<b>Who</b>	<b>What...</b>
13 <sup>th</sup> April	Whole school	Summer 1 starts at 8:40am
16 <sup>th</sup> April	Year 3 Sycamore class	Sycamore class start swimming
22 <sup>nd</sup> - 24 <sup>th</sup> April	Year 4	Residential trip to PGL
4 <sup>th</sup> May	whole school	Bank holiday
5 <sup>th</sup> May	Year 1	Victorian school workshop at Oxfordshire Museum
11 <sup>th</sup> May to 14 <sup>th</sup> May	Year 6	SAT's Week
15 <sup>th</sup> May	all school	Class photos
19 <sup>th</sup> May	pre-school and reception	Early Years sports afternoon at 2pm
20 <sup>th</sup> May	Reception children	Vision screening
22 <sup>nd</sup> May	Year 1-6	Sports day and picnic Year 1-3 am Year 4-6pm

**2026 Summer 2**

<b>When</b>	<b>Who</b>	<b>What...</b>
8 <sup>th</sup> June	Year 3	Chedworth Roman Villa Visit
9 <sup>th</sup> June	Year 4	Ashmolean Museum visit
10 <sup>th</sup> June	EYFS	Get Active Olympic Event
12 <sup>th</sup> June	whole school	School closed to children. Inset Day
17 <sup>th</sup> June	KS1	Olympic Event
18 <sup>th</sup> June	Selected team	<b>Swimming Gala</b>
24 <sup>th</sup> June	KS2	Olympic Event
7 <sup>th</sup> July	current children reception to Year 5	Transition day 1
7 <sup>th</sup> July	new reception children	one to one parent meetings with new teacher for children new to school. (not existing pre school children)
8 <sup>th</sup> July	current children reception to Year 5	Transition day 2
8 <sup>th</sup> July	new reception children	first transition session in school 9:00-11 am or 1 - 3pm
10 <sup>th</sup> July	Whole school	End of year reports will be emailed out to all parents
14 <sup>th</sup> July	Year 6	Year 6 party 3:30pm - 5:30pm
15 <sup>th</sup> July	Parents of children in Rocksteady	Rocksteady Concerts 10:30am and 2:30pm
16 <sup>th</sup> July	Year 6	Year 6 performance at 2pm and 6pm
16 <sup>th</sup> July	pre school	last day of term for pre school children
17 <sup>th</sup> July	Parents of children in Year 6	Year 6 assembly 10:15am
17 <sup>th</sup> July	Whole school	school closes at 12 noon. Gates will open at 11:50am.

## Looking ahead.....Term dates 2026-27

First Day of term	Thursday 3 <sup>rd</sup> September 2026
Half term	26 <sup>th</sup> October - 30 <sup>th</sup> October 2026
Last day of term	Thursday 17 <sup>th</sup> December at 12 noon (nursery sessions finish on Wednesday 16 <sup>th</sup> December)
Winter Holidays	18 <sup>th</sup> December - 1 <sup>st</sup> January 2027
Further information	Thursday 3 <sup>rd</sup> September 2026 and Friday 4 <sup>th</sup> September 2026 half days for Reception children, allocated as either morning or afternoon. 7 <sup>th</sup> September in full time. 9 <sup>th</sup> September Pre-school children start on allocated days INSET DAYS Tuesday 1 <sup>st</sup> September and Wednesday 2 <sup>nd</sup> September Friday 9 <sup>th</sup> October 2026
Spring Term	
First day of term	4 <sup>th</sup> January 2027
Half term	15 <sup>th</sup> February - 19 <sup>th</sup> February 2027
Last day of term	Pre school 24 <sup>th</sup> March 2027 Rest of school 25 <sup>th</sup> March at 12 noon, gates will open at 11:50am
Easter/Spring holidays	26 <sup>th</sup> March - 9 <sup>th</sup> April 2027
Further information	
Summer term	
First day of term	12 <sup>th</sup> April 2027
Half term	31 <sup>st</sup> May - 4 <sup>th</sup> June 2027
Last day of term	Pre school: Monday 19 <sup>th</sup> July Rest of school: Tuesday 20 <sup>th</sup> July at 12 noon. Gates will open at 11:50am.
Further information	Inset day on Friday 11 <sup>th</sup> June and Wednesday 21 <sup>st</sup> July